



INSERT &
CUTTER BODY
PROMOS

VARIABLE

BY WIDIA

WIDIA ™

VARlable by WIDIA is a new tooling program that offers customers more ways to save while reducing tooling costs. Designed to be flexible, VARlable by WIDIA helps you save on steel costs based on the number of inserts you buy – the more inserts you buy the more you save. Find out about how you can take advantage of this program.

INCH

Program Guidelines For VARIABLE by WIDIA

- Applicable for US, Canada, and Mexico only.
- Free tooling limited to steel with no additional discounts on carbide.
- Please reference the appropriate ordering code on your PO when order is placed.
- Offer applies to qualified, standard catalog products only (Ferts), and is not valid in combination with any other offer or on exchange of current WIDIA products.
- Purchased and free items must be on the same order number.
- Program to be used for new business opportunities and not for existing repeat business.
- All orders must be for immediate shipment. Previous purchases, scheduled agreements, contract releases, blanked orders, and price concession orders are not covered by this program.
- All transactions are final. No returns are permitted other than defective product.
- Program is void where prohibited by law. All local, state, and federal laws apply.
- On-going program until further notice.

* Available Product Families:

| | |
|----------|-------------|
| • M1200 | • VSM17 |
| • VSM890 | • VSM490-10 |
| • VSM11 | • VSM490-15 |
| • WGC | • VXF-12 |
| • TDMX | • Top Cut 4 |

* VHM17 and M1200 Mini cutters are not included in this program.



International Price Adjustments

| | |
|---------------|--|
| Canada | Use a factor of 1.25 for conversion rate |
| Mexico | Need to account for 6% import cost on orders |

WIDIA 

www.widia.com

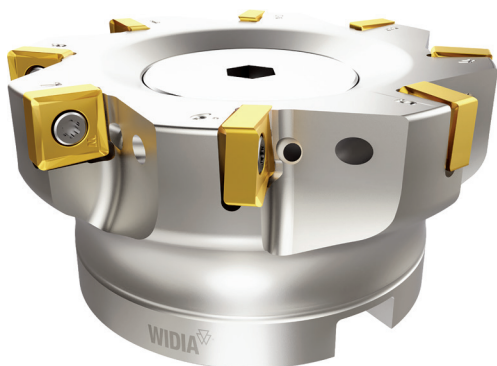
Shell Mill Sizes & Ordering Codes

Inserts

| | 10 | 20 | 30 | 40 | 60 | 100 |
|-----|---------------------|---------------------|---------------------|---------------------|-------------------|------------------|
| 1 ½ | \$150 VBWMS15010 | \$125 VBWMS15020 | \$100 VBWMS15030 | \$75 VBWMS15040 | \$0 VBWMS15060 | - |
| 2 | \$200 VBWMS210 | \$175 VBWMS220 | \$150 VBWMS230 | \$100 VBWMS240 | \$0 VBWMS260 | - |
| 2 ½ | \$250 VBWMS25010 | \$225 VBWMS25020 | \$200 VBWMS25030 | \$175 VBWMS25040 | \$0 VBWMS25060 | - |
| 3 | \$300 VBWMS310 | \$275 VBWMS320 | \$250 VBWMS330 | \$225 VBWMS340 | \$0 VBWMS360 | - |
| 4 | \$400 VBWMS410 | \$350 VBWMS420 | \$300 VBWMS430 | \$250 VBWMS440 | \$200 VBWMS460 | \$0 VBWMS4100 |
| 5 | \$500 VBWMS510 | \$450 VBWMS520 | \$400 VBWMS530 | \$350 VBWMS540 | \$300 VBWMS560 | \$0 VBWMS5100 |
| 6 | \$600 VBWMS610 | \$550 VBWMS620 | \$500 VBWMS630 | \$450 VBWMS640 | \$400 VBWMS660 | \$0 VBWMS6100 |

Cutter Size (Inches)

*Prices shown are for cutter bodies only and reflect USA dollars.



WIDIA 

www.widia.com

Cylindrical Mill Sizes & Ordering Codes

Inserts

Cutter Size (Inches)

| | 10 | 20 | 30 | 40 | 60 |
|--------------|----------------------------|----------------------------|----------------------------|----------------------------|--------------------------|
| 1/2 | \$50 VBWMC50010 | \$40 VBWMC50020 | \$25 VBWMC50030 | \$10 VBWMC50040 | \$0 VBWMC50060 |
| 5/8 | \$75 VBWMC62510 | \$50 VBWMC62520 | \$35 VBWMC62530 | \$15 VBWMC62540 | \$0 VBWMC62560 |
| 3/4 | \$100 VBWMC75010 | \$75 VBWMC75020 | \$50 VBWMC75030 | \$25 VBWMC75040 | \$0 VBWMC75060 |
| 1 | \$125 VBWMC110 | \$100 VBWMC120 | \$75 VBWMC130 | \$50 VBWMC140 | \$0 VBWMC160 |
| 1 1/4 | \$150 VBWMC12510 | \$125 VBWMC12520 | \$100 VBWMC12530 | \$75 VBWMC12540 | \$0 VBWMC12560 |
| 1 1/2 | \$175 VBWMC15010 | \$150 VBWMC15020 | \$125 VBWMC15030 | \$100 VBWMC15040 | \$0 VBWMC15060 |

*Prices shown are for cutter bodies only and reflect USA dollars.



WIDIA 

www.widia.com

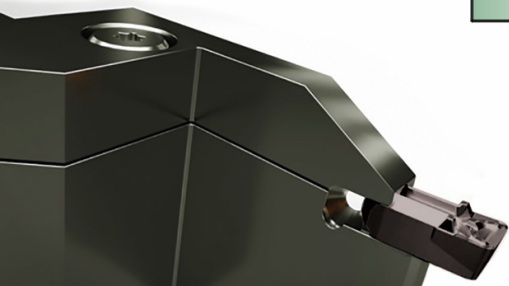
WGC Sizes & Ordering Codes

Holder (inch)

| Inserts | | | | |
|---------|--------------------|--------------------|--------------------|-------------------|
| | 10 | 20 | 30 | 40 |
| 3/4" | \$40 VBWTH75010 | \$25 VBWTH75020 | \$15 VBWTH75030 | \$0 VBWTH75040 |
| 1" | \$55 VBWTH110 | \$45 VBWTH120 | \$25 VBWTH130 | \$0 VBWTH140 |
| 1 1/4" | \$75 VBWTH12510 | \$65 VBWTH12520 | \$35 VBWTH12530 | \$0 VBWTH12540 |
| 1 1/2" | \$90 VBWTH15010 | \$80 VBWTH15020 | \$40 VBWTH15030 | \$0 VBWTH15040 |

Blade (mm)

| Inserts | | | |
|---------|---------------------|---------------------|--------------------|
| | 10 | 20 | 30 |
| 19 | \$35 VBWTB19MM10 | \$15 VBWTB19MM20 | \$0 VBWTB19MM30 |
| 26 | \$45 VBWTB26MM10 | \$25 VBWTB26MM20 | \$0 VBWTB26MM30 |
| 32 | \$55 VBWTB32MM10 | \$35 VBWTB32MM20 | \$0 VBWTB32MM30 |
| 52 | \$65 VBWTB52MM10 | \$45 VBWTB52MM20 | \$0 VBWTB52MM30 |



WGC Sizes & Ordering Codes

Inserts

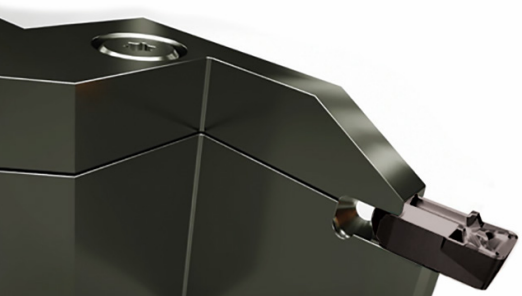
Modular Holder
(inch)

| | 20 | 30 | 40 | 50 |
|--------|----------------------|---------------------|--------------------|-------------------|
| 1" | \$90 VBWTMH120 | \$80 VBWTMH130 | \$60 VBWTH140 | \$0 VBWTH150 |
| 1 1/4" | \$95 VBWTMH12520 | \$85 VBWTMH12530 | \$65 VBWTH12540 | \$0 VBWTH12550 |
| 1 1/2" | \$100 VBWTMH15020 | \$90 VBWTMH15030 | \$70 VBWTH15040 | \$0 VBWTH15050 |

Inserts

Modular Blade
(mm)

| | 10 | 20 | 30 | 40 |
|----|----------------------|----------------------|----------------------|---------------------|
| 50 | \$65 VBWTMB50MM10 | \$50 VBWTMB50MM20 | \$30 VBWTMB50MM30 | \$0 VBWTMB50MM40 |
| 65 | \$75 VBWTMB60MM10 | \$60 VBWTMB60MM20 | \$40 VBWTMB60MM30 | \$0 VBWTMB60MM40 |



TDMX Sizes & Ordering Codes



Heads

Dia. Range (Inches)

| 1.5xD | 2 | 4 | 6 | 8 | 10 | 12 |
|--------------------------------|-----------------------|-----------------------|---------------------|---|----|----|
| .630 - .7874 VBWTD15X6302 | \$140 VBWTD15X6302 | \$60 VBWTD15X6304 | \$0 VBWTD15X6306 | - | - | - |
| .7875 - .9448 VBWTD15X7872 | \$190 VBWTD15X7872 | \$100 VBWTD15X7874 | \$0 VBWTD15X7876 | - | - | - |
| .9449 - 1.1023 VBWTD15X9442 | \$220 VBWTD15X9442 | \$150 VBWTD15X9444 | \$0 VBWTD15X9446 | - | - | - |
| 1.024 - 1.2598 VBWTD15X1022 | \$260 VBWTD15X1022 | \$180 VBWTD15X1024 | \$0 VBWTD15X1026 | - | - | - |

Dia. Range (Inches)

| 3xD | 2 | 4 | 6 | 8 | 10 | 12 |
|--------------------------------|----------------------|----------------------|----------------------|--------------------|----|----|
| .630 - .7874 VBWTD3X6302 | \$160 VBWTD3X6302 | \$100 VBWTD3X6304 | \$50 VBWTD3X6306 | \$0 VBWTD3X6308 | - | - |
| .7875 - .9448 VBWTD3X7872 | \$230 VBWTD3X7872 | \$150 VBWTD3X7874 | \$100 VBWTD3X7876 | \$0 VBWTD3X7878 | - | - |
| .9449 - 1.1023 VBWTD3X9442 | \$290 VBWTD3X9442 | \$180 VBWTD3X9444 | \$130 VBWTD3X9446 | \$0 VBWTD3X9448 | - | - |
| 1.024 - 1.2598 VBWTD3X1022 | \$340 VBWTD3X1022 | \$250 VBWTD3X1024 | \$190 VBWTD3X1026 | \$0 VBWTD3X1028 | - | - |
| 1.2599 - 1.417 VBWTD3X1252 | \$400 VBWTD3X1252 | \$280 VBWTD3X1254 | \$210 VBWTD3X1256 | \$0 VBWTD3X1258 | - | - |
| 1.4174 - 1.5748 VBWTD3X1412 | \$440 VBWTD3X1412 | \$320 VBWTD3X1414 | \$250 VBWTD3X1416 | \$0 VBWTD3X1418 | - | - |



WIDIA 

www.widia.com

TDMX Sizes & Ordering Codes

Heads

Dia. Range (Inches)

| 5xD | 2 | 4 | 6 | 8 | 10 | 12 |
|-------------------------------|----------------------|----------------------|----------------------|--------------------|----|----|
| .630 - .7874 VBWTD5X6302 | \$200 VBWTD5X6302 | \$130 VBWTD5X6304 | \$70 VBWTD5X6306 | \$0 VBWTD5X6308 | - | - |
| .7875 - .9448 VBWTD5X7872 | \$250 VBWTD5X7872 | \$180 VBWTD5X7874 | \$130 VBWTD5X7876 | \$0 VBWTD5X7878 | - | - |
| .9449 - 1.1023 VBWTD5X9442 | \$320 VBWTD5X9442 | \$250 VBWTD5X9444 | \$190 VBWTD5X9446 | \$0 VBWTD5X9448 | - | - |
| 1.024 - 1.2598 VBWTD5X1022 | \$380 VBWTD5X1022 | \$280 VBWTD5X1024 | \$210 VBWTD5X1026 | \$0 VBWTD5X1028 | - | - |
| 1.2599 - 1.417 VBWTD5X1252 | \$430 VBWTD5X1252 | \$320 VBWTD5X1254 | \$250 VBWTD5X1256 | \$0 VBWTD5X1258 | - | - |
| 1.4174- 1.5748 VBWTD5X1412 | \$480 VBWTD5X1412 | \$380 VBWTD5X1414 | \$310 VBWTD5X1416 | \$0 VBWTD5X1418 | - | - |

Dia. Range (Inches)

| 8xD | 2 | 4 | 6 | 8 | 10 | 12 |
|-------------------------------|----------------------|----------------------|----------------------|----------------------|---------------------|----|
| .630 - .7874 VBWTD8X6302 | \$220 VBWTD8X6302 | \$180 VBWTD8X6304 | \$130 VBWTD8X6306 | \$90 VBWTD8X6308 | \$0 VBWTD8X63010 | - |
| .7875 - .9448 VBWTD8X7872 | \$290 VBWTD8X7872 | \$250 VBWTD8X7874 | \$190 VBWTD8X7876 | \$120 VBWTD8X7878 | \$0 VBWTD8X78710 | - |
| .9449 - 1.1023 VBWTD8X9442 | \$360 VBWTD8X9442 | \$280 VBWTD8X9444 | \$210 VBWTD8X9446 | \$150 VBWTD8X9448 | \$0 VBWTD8X94410 | - |
| 1.024 - 1.2598 VBWTD8X1022 | \$440 VBWTD8X1022 | \$320 VBWTD8X1024 | \$250 VBWTD8X1026 | \$190 VBWTD8X1028 | \$0 VBWTD8X10210 | - |
| 1.2599 - 1.417 VBWTD8X1252 | \$490 VBWTD8X1252 | \$380 VBWTD8X1254 | \$310 VBWTD8X1256 | \$220 VBWTD8X1258 | \$0 VBWTD8X12510 | - |
| 1.4174- 1.5748 VBWTD8X1412 | \$520 VBWTD8X1412 | \$420 VBWTD8X1414 | \$360 VBWTD8X1416 | \$300 VBWTD8X1418 | \$0 VBWTD8X14110 | - |



www.widia.com

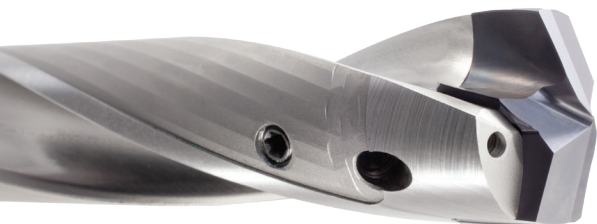
TDMX Sizes & Ordering Codes



Heads

Dia. Range (Inches)

| 12xD | 2 | 4 | 6 | 8 | 10 | 12 |
|--------------------------------|-----------------------|-----------------------|-----------------------|------------------------|------------------------|----------------------|
| .630 - .7874 VBWTD12X6302 | \$290 VBWTD12X6302 | \$250 VBWTD12X6304 | \$190 VBWTD12X6306 | \$120 VBWTD12X6308 | \$80 VBWTD12X63010 | \$0 VBWTD12X63012 |
| .7875 - .9448 VBWTD12X7872 | \$380 VBWTD12X7872 | \$280 VBWTD12X7874 | \$210 VBWTD12X7876 | \$150 VBWTD12X7878 | \$110 VBWTD12X78710 | \$0 VBWTD12X78712 |
| .9449 - 1.1023 VBWTD12X9442 | \$450 VBWTD12X9442 | \$320 VBWTD12X9444 | \$250 VBWTD12X9446 | \$190 VBWTD12X79448 | \$140 VBWTD12X94410 | \$0 VBWTD12X94412 |
| 1.024 - 1.2598 VBWTD12X1022 | \$540 VBWTD12X1022 | \$380 VBWTD12X1024 | \$310 VBWTD12X1026 | \$220 VBWTD12X1028 | \$180 VBWTD12X10210 | \$0 VBWTD12X10212 |



www.widia.com

Top Cut 4 Sizes & Ordering Codes

Inserts

Dia. Range

| 2xD | 20 | 30 | 40 | 60 | 80 | 100 |
|-------------------------------|----------------------|----------------------|----------------------|----------------------|----------------------|---------------------|
| A-B (.473 - .734) | \$170 VBWTC2XAB20 | \$140 VBWTC2XAB30 | \$80 VBWTC2XAB40 | \$0 VBWTC2XAB60 | - | - |
| C-D (.750 - 1.156) | \$190 VBWTC2XCD20 | \$170 VBWTC2XCD30 | \$100 VBWTC2XCD40 | \$0 VBWTC2XCD60 | - | - |
| E-F (.969 - 1.438) | \$220 VBWTC2XEF20 | \$190 VBWTC2XEF30 | \$160 VBWTC2XEF40 | \$100 VBWTC2XEF60 | \$0 VBWTC2XEF80 | - |
| G-H (1.813 - 2.500) | \$290 VBWTC2XGH20 | \$270 VBWTC2XGH30 | \$220 VBWTC2XGH40 | \$150 VBWTC2XGH60 | \$100 VBWTC2XGH80 | \$0 VBWTC2XGH100 |

Dia. Range

| 3xD | 20 | 30 | 40 | 60 | 80 | 100 |
|-------------------------------|----------------------|----------------------|----------------------|----------------------|----------------------|---------------------|
| A-B (.473 - .734) | \$190 VBWTC3XAB20 | \$160 VBWTC3XAB30 | \$100 VBWTC3XAB40 | \$0 VBWTC3XAB60 | - | - |
| C-D (.750 - 1.156) | \$210 VBWTC3XCD20 | \$180 VBWTC3XCD30 | \$120 VBWTC3XCD40 | \$0 VBWTC3XCD60 | - | - |
| E-F (.969 - 1.438) | \$240 VBWTC3XEF20 | \$210 VBWTC3XEF30 | \$160 VBWTC3XEF40 | \$100 VBWTC3XEF60 | \$20 VBWTC3XEF80 | \$0 VBWTC3XEF100 |
| G-H (1.813 - 2.500) | \$310 VBWTC3XGH20 | \$290 VBWTC3XGH30 | \$240 VBWTC3XGH40 | \$170 VBWTC3XGH60 | \$120 VBWTC3XGH80 | \$0 VBWTC3XGH100 |

*Numbers listed in parentheses represent pocket seat size.



WIDIA 

www.widia.com

Top Cut 4 Sizes & Ordering Codes

Inserts

Dia. Range

| 4xD | 20 | 30 | 40 | 60 | 80 | 100 |
|-------------------------------|----------------------|----------------------|----------------------|----------------------|----------------------|---------------------|
| A-B (.473 - .734) | \$210 VBWTC4XAB20 | \$180 VBWTC4XAB30 | \$100 VBWTC4XAB40 | \$0 VBWTC4XAB60 | - | - |
| C-D (.750 - 1.156) | \$230 VBWTC4XCD20 | \$200 VBWTC4XCD30 | \$160 VBWTC4XCD40 | \$80 VBWTC4XCD60 | \$0 VBWTC4XCD80 | - |
| E-F (.969 - 1.438) | \$260 VBWTC4XEF20 | \$230 VBWTC4XEF30 | \$180 VBWTC4XEF40 | \$100 VBWTC4XEF60 | \$30 VBWTC4XEF80 | \$0 VBWTC4XEF100 |
| G-H (1.813 - 2.500) | \$360 VBWTC4XGH20 | \$330 VBWTC4XGH30 | \$280 VBWTC4XGH40 | \$200 VBWTC4XGH60 | \$120 VBWTC4XGH80 | \$0 VBWTC4XGH100 |

Dia. Range

| 5xD | 20 | 30 | 40 | 60 | 80 | 100 |
|-------------------------------|----------------------|----------------------|----------------------|----------------------|----------------------|---------------------|
| A-B (.473 - .734) | \$230 VBWTC5XAB20 | \$200 VBWTC5XAB30 | \$150 VBWTC5XAB40 | \$90 VBWTC5XAB60 | \$0 VBWTC5XAB80 | - |
| C-D (.750 - 1.156) | \$250 VBWTC5XCD20 | \$220 VBWTC5XCD30 | \$170 VBWTC5XCD40 | \$110 VBWTC5XCD60 | \$40 VBWTC5XCD80 | \$0 VBWTC5XCD100 |
| E-F (.969 - 1.438) | \$310 VBWTC5XEF20 | \$290 VBWTC5XEF30 | \$240 VBWTC5XEF40 | \$150 VBWTC5XEF60 | \$70 VBWTC5XEF80 | \$0 VBWTC5XEF100 |
| G-H (1.813 - 2.500) | \$400 VBWTC5XGH20 | \$380 VBWTC5XGH30 | \$330 VBWTC5XGH40 | \$240 VBWTC5XGH60 | \$120 VBWTC5XGH80 | \$0 VBWTC5XGH100 |

*Numbers listed in parentheses represent pocket seat size.



WIDIA 

www.widia.com